

## Genetic Preservation Instructions For Pets - International

### General Information

This kit and the sampling techniques are designed to obtain the highest quality tissue samples possible for establishing cell cultures and cheek samples for DNA verification purposes. Each kit is designed for obtaining samples from one animal. Biopsy samples should be taken by a veterinarian.

### Shipping

A return FedEx label is included. Samples should be collected and shipped on Mondays, Tuesdays, or Fridays whenever possible. After the biopsy, call FedEx at 1-800-580-0895 to schedule a pickup or drop the box off at a FedEx location.

### Kit Contents

#### For Tissue Biopsy

- 1 Sterile 4 mm Biopsy Punch
- 4 Sample Vials with Sterile Media
- 4 Parafilm® Sealing Strips
- NanoCool™ Cooling Unit
- Return FedEx Label, Commercial Invoice, Statement of Health

#### For Cheek Swab

- Buccal cheek brushes (dogs) or cotton swabs (cats)
- DNA Submission Form
- Envelope addressed to Veterinary Genetics Laboratory

**Great news! You don't have to unpack your kit. Please leave the kit at room temperature until the biopsy.**



**Use this QR code to watch  
how to pack your kit**



**Questions?** Call us M-F 8am-5pm CST at +1512-986-7212 or call/text/WhatsApp+1512-413-5742

## STEP 1 - TISSUE SAMPLE COLLECTION



### Pet Preparation

Utilize appropriate anesthesia and/or sedation as required. Local or general anesthesia is permissible. NOTE: Please avoid the use of Lidocaine when possible as it has been shown to be harmful to cells and may compromise the sample. Bupivacaine or Ropivacaine are acceptable alternatives to Lidocaine.

### Biopsy Site Preparation

Biopsy sites can include the ventral abdomen, inner thigh, or dorsal back. The biopsy areas must be shaved and cleansed with a series of chlorhexidine and alcohol scrubs.

### Biopsy Procedure

1. Take 3 to 4 skin samples using the 4 mm biopsy punch provided, with sterile technique. Rotate the biopsy punch on the surface of the skin until it cuts through all the layers including the epidermis, dermis, and the most superficial parts of the subcutis.  
**\*\*If the pet is at end of life, is euthanized or is deceased, using a sterile scalpel collect a total of Four 2.0 cm x 2.0 cm, full thickness skin samples, including at least 1 sample from the ear pinna.**
2. Place each biopsy in a separate vial. Close and seal each vial with the Parafilm Sealing Strip.
3. Close the biopsy sites using appropriate suture materials.
4. Place the sample vials in the refrigerator until shipping. Ship samples as soon as possible after the biopsy. Biopsy samples must be received by ViaGen Pets within 5 days of the biopsy date.
5. Complete the Biopsy Information Form and include in sample shipment.

### Shipment Procedure for Biopsy Samples

- Open the kit, removing the NanoCool™ Cooling unit. Place the unit foil side down, on a hard, flat surface. The white activator button should be pointing upward.
- Place the sample vials in the inserts once ready to ship.
- Activate the Cooling unit by pressing straight down on the activator button with your thumb. The NanoCool™ logo should turn blue within 30 seconds to 3 minutes of pressing the activator button.
- Once activated, return the Cooling unit to its original position in the kit. Ensure it is a snug fit.
- Place the biopsy form and sealed envelope with the cheek swabs on top of the Cooling unit and then close the kit, taping the lid shut.
- Sign 3 copies of the Commercial Invoice and 3 copies of the Statement of Health and place behind the FedEx label in the shipping pouch. Apply the pouch to the outside of the box and call FedEx at 1-800-580-0895 to schedule your pickup or drop the kit off at a FedEx location.

**Questions?** Call us M-F 8am-5pm CST at +1 512-986-7212 or call/text/WhatsApp +1 512-413-5742

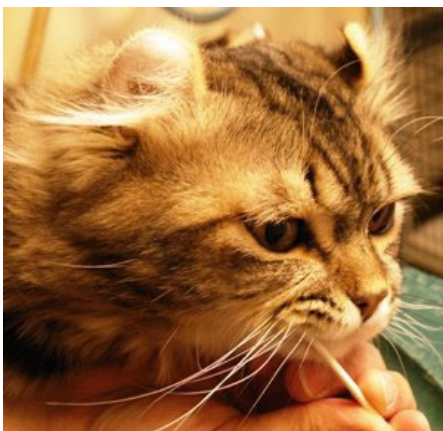
## STEP 2 – CHEEK SWAB COLLECTION

- Before collecting the sample make sure the pet has not nursed or had anything to eat or drink 60 minutes prior to collecting the sample.
- Sample one pet at a time as outlined below.
- Place the swabs in the envelope provided going to the Veterinary Genetics Laboratory. We will mail them via USPS once your kit is received.



### Cheek Swab Protocol - Canine

1. Use 3 buccal cheek brushes provided.
2. Place brush head against the inside of the cheek and gums, swirl vigorously 8 – 10 times.
3. Wave brushes in the air for 20-30 seconds to air dry before placing back in the sleeve.
4. Place the brushes, along with the included DNA Submission Form, in the provided envelope addressed to Veterinary Genetics Laboratory. You do not need to include a payment. You do not need to add owner information to the DNA Submission Form.
5. Seal the envelope and place it on top of the Cooling Unit for shipment with the biopsy samples.



### Cheek Swab Protocol - Feline

1. Use both ends of 2 cotton swabs.
2. Place swab head against the inside of the cheek and gums, swirl vigorously 8 – 10 times.
3. Wave cotton swabs in the air for 20-30 seconds to air dry before taping to the designated area on the DNA Submission Form.
4. Place cotton swabs and DNA Submission Form in the provided envelope addressed to Veterinary Genetics Laboratory. You do not need to include payment. You do not need to add owner information to the DNA Submission Form.
5. Seal the envelope and place it on top of the Cooling Unit for shipment with the biopsy samples.

**Questions?** Call us M-F 8am-5pm CST at +1512-986-7212 or call/text/WhatsApp+1512-413-5742